

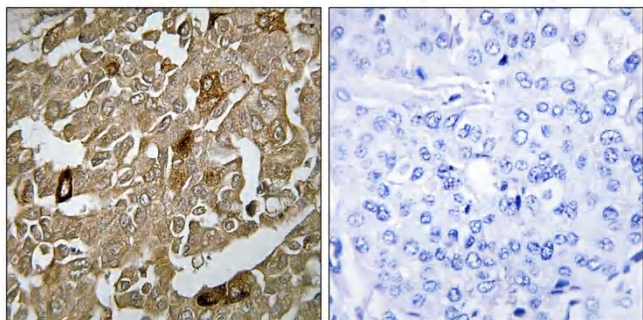


# BTBD6 Polyclonal Antibody

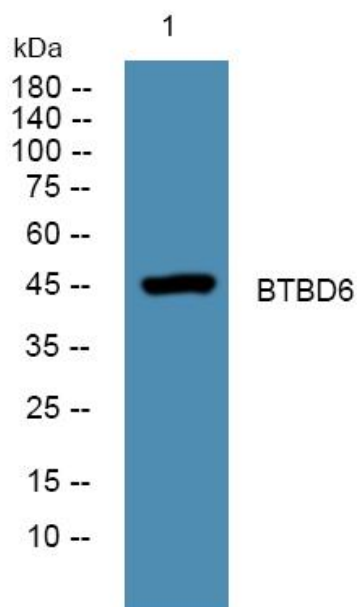
<b>Catalog No</b>	YP-Ab-01576
<b>Isotype</b>	IgG
<b>Reactivity</b>	Human;Mouse
<b>Applications</b>	WB;IHC;IF;ELISA
<b>Gene Name</b>	BTBD6
<b>Protein Name</b>	BTB/POZ domain-containing protein 6
<b>Immunogen</b>	The antiserum was produced against synthesized peptide derived from human BTBD6. AA range:91-140
<b>Specificity</b>	BTBD6 Polyclonal Antibody detects endogenous levels of BTBD6 protein.
<b>Formulation</b>	Liquid in PBS containing 50% glycerol, 0.5% BSA and 0.02% sodium azide.
<b>Source</b>	Polyclonal, Rabbit,IgG
<b>Purification</b>	The antibody was affinity-purified from rabbit antiserum by affinity-chromatography using epitope-specific immunogen.
<b>Dilution</b>	WB: 1/500 - 1/2000. IHC: 1/100 - 1/300. ELISA: 1/10000.. IF 1:50-200
<b>Concentration</b>	1 mg/ml
<b>Purity</b>	≥90%
<b>Storage Stability</b>	-20°C/1 year
<b>Synonyms</b>	BTBD6; BDPL; BTB/POZ domain-containing protein 6; Lens BTB domain protein
<b>Observed Band</b>	45kD
<b>Cell Pathway</b>	Cytoplasm . Found in punctated bodies in the cytoplasm. .
<b>Tissue Specificity</b>	Expressed in lens.
<b>Function</b>	similarity:Contains 1 BTB (POZ) domain.,tissue specificity:Expressed in lens.,
<b>Background</b>	similarity:Contains 1 BTB (POZ) domain.,tissue specificity:Expressed in lens.,
<b>matters needing attention</b>	Avoid repeated freezing and thawing!
<b>Usage suggestions</b>	This product can be used in immunological reaction related experiments. For more information, please consult technical personnel.



## Products Images



Immunohistochemistry analysis of paraffin-embedded human breast carcinoma tissue, using BTBD6 Antibody. The picture on the right is blocked with the synthesized peptide.



Western blot analysis of lysates from SH-SY5Y cells, primary antibody was diluted at 1:1000, 4° over night